



ROCHESTER

THE
FLOWER
CITY

**Rochester Public Library
Reference Book
Not For Circulation**

Local History Division
Rochester Public Library
115 South Avenue
Rochester, New York 14604



ROCHESTER



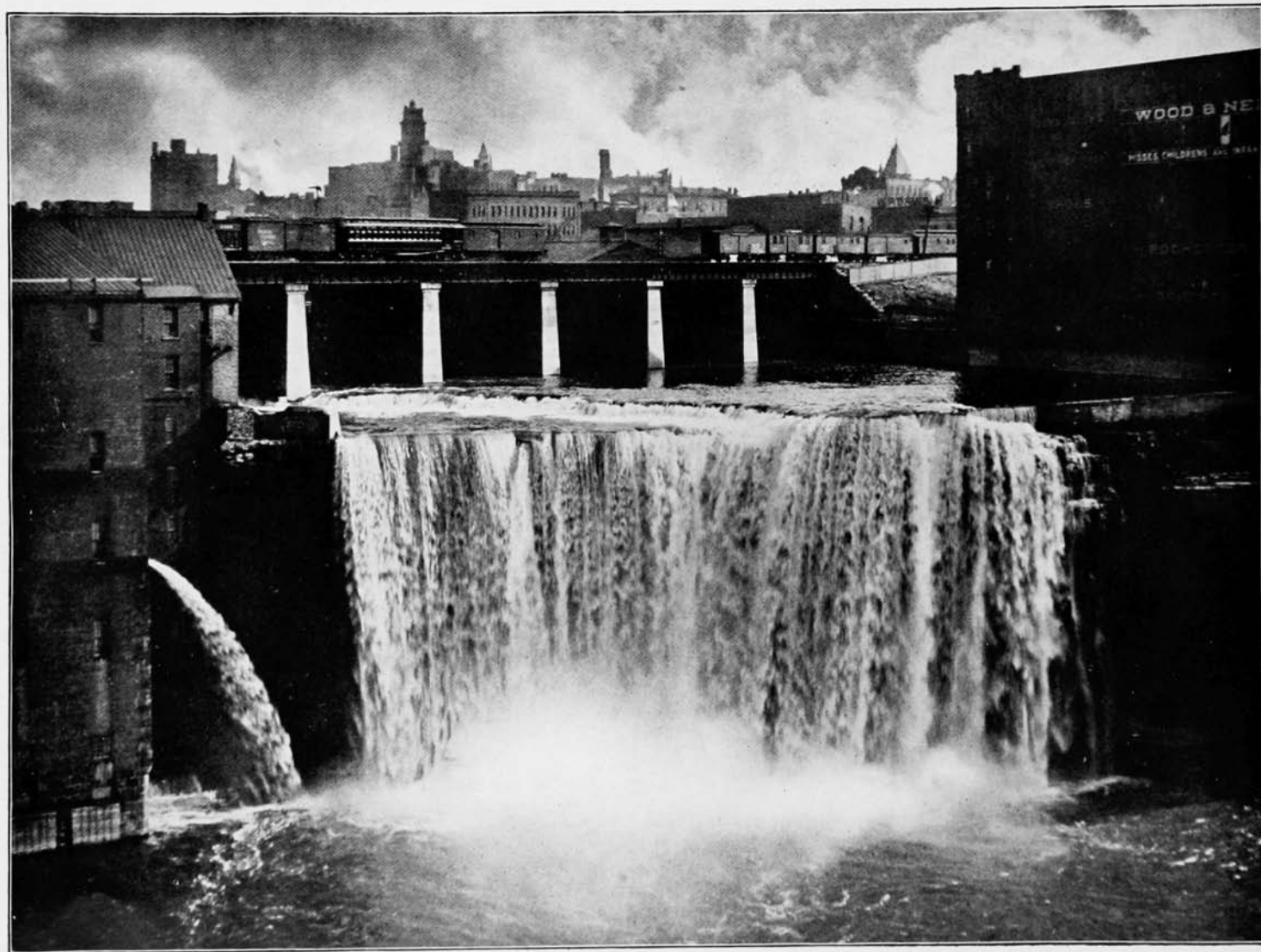
ROCHESTER, with a population of one hundred and fifty thousand, is situated on both sides of the Genesee River, seven miles from Lake Ontario.

Near the middle of the city the river forms a perpendicular fall one hundred feet high. It also forms two other falls to the north within the city limits, the Middle Fall, twenty-five feet high, and the Lower Fall, eighty-five feet high. Main Street crosses the river by a concealed bridge lined on both sides with houses in the style of the Old London Bridge and the "Ponte Vecchio" of Florence. No bridge of this kind exists elsewhere in America. Near this bridge the Erie Canal is conducted over the river by an aqueduct eight hundred and fifty feet long and forty-five feet wide, which is a wonderful piece of engineering. A fine view of the city may be obtained from the tower of the Powers Building, two hundred and four feet high. Rochester is the third city in size in New York State and probably has more varied industries than any city in the world. It leads the world in the manufacture of photographic materials and cameras, and it was here the word "Kodak" was coined and made a familiar term wherever the English language is spoken. Rochester is the third city in the United States in the manufacture of clothing, the number of factories being thirty-seven and the annual output about \$10,000,000.

Among the various points of interest in Rochester may be mentioned the University of Rochester, with its fine geological collection, the City Hall near West Main Street, with a tower one hundred and seventy-five feet high, the Statue of Frederick Douglass, the negro statesman, erected by Stanley W. Edwards in 1898, the numerous flour mills and breweries and the extensive nurseries on the outskirts of the city.

Rochester is exceptionally favored in the matter of public parks and pleasure resorts, such as Highland Park, Seneca Park, Genesee Valley Park and numerous others. Ontario Beach, situated on Lake Ontario, about seven miles from the city, affords excellent bathing and has first-class hotel accommodations.

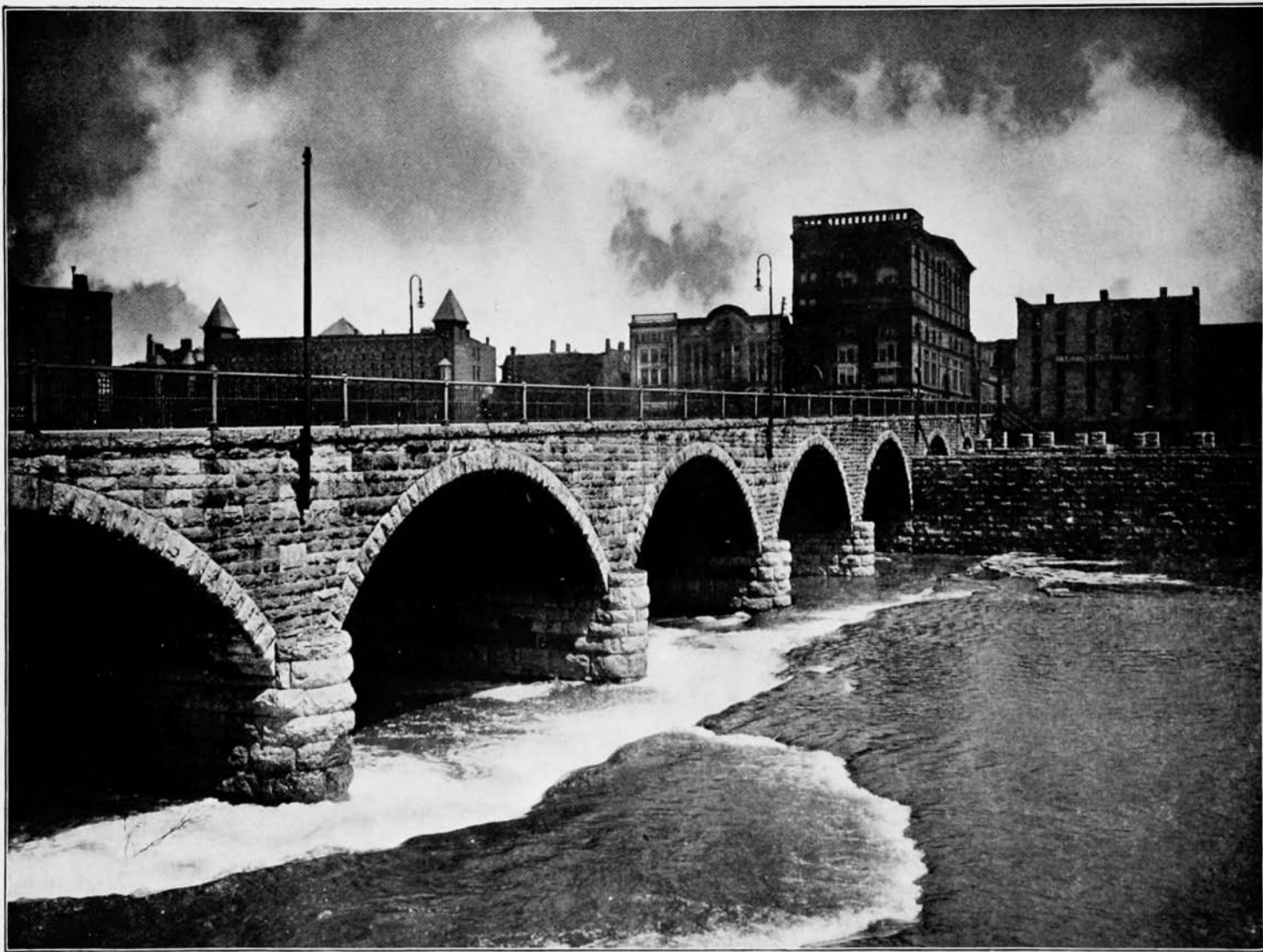
J. MURRAY JORDAN, PUBLISHER
1438 South Penn Square
PHILADELPHIA



UPPER FALLS OF THE GENESEE RIVER



NEW YORK CENTRAL AND HUDSON RIVER RAILWAY STATION



COURT STREET BRIDGE



MAIN EAST FROM ST. PAUL STREET



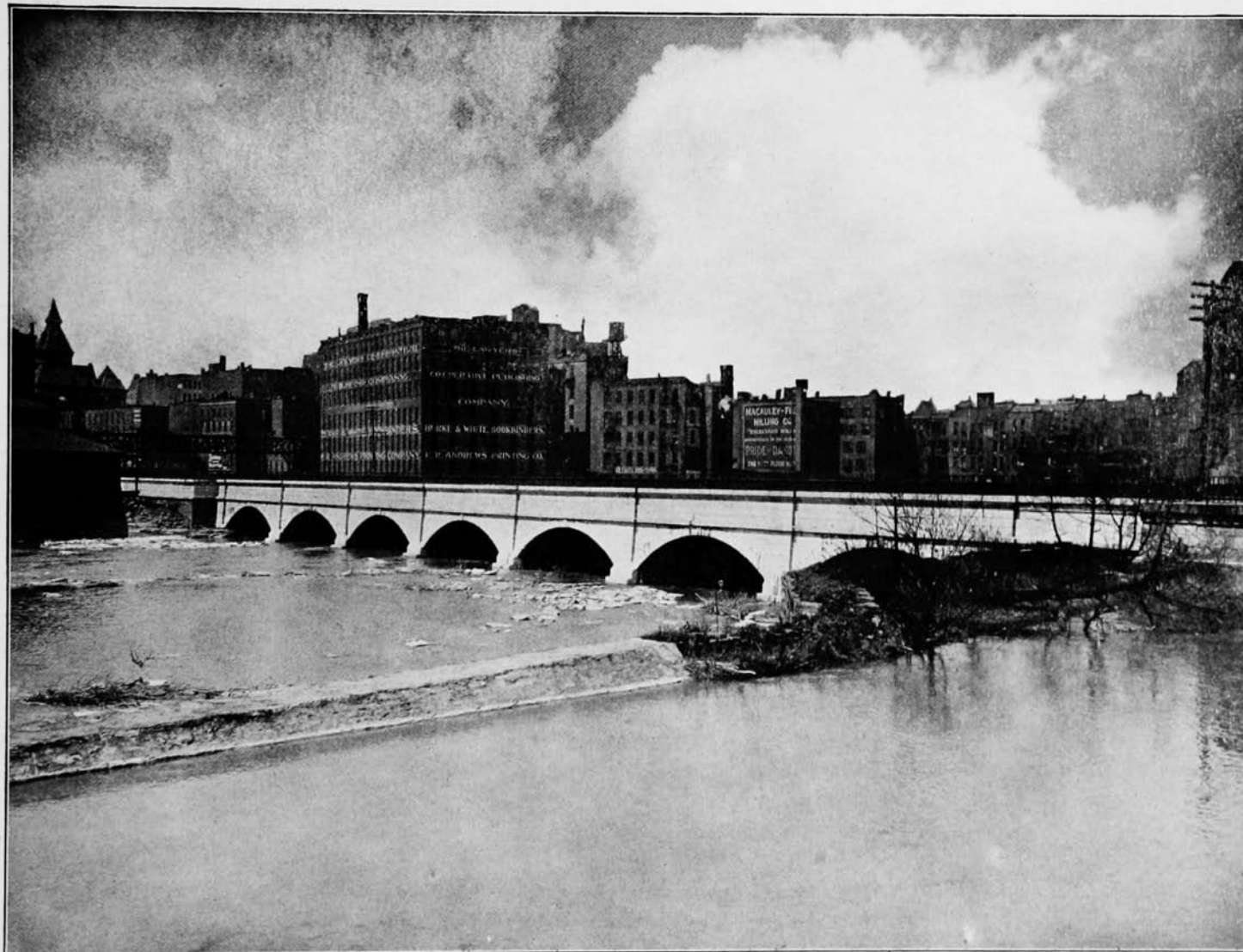
MAIN STREET LOOKING WEST



STATE STREET NORTH FROM EXCHANGE



SOUTH AVENUE



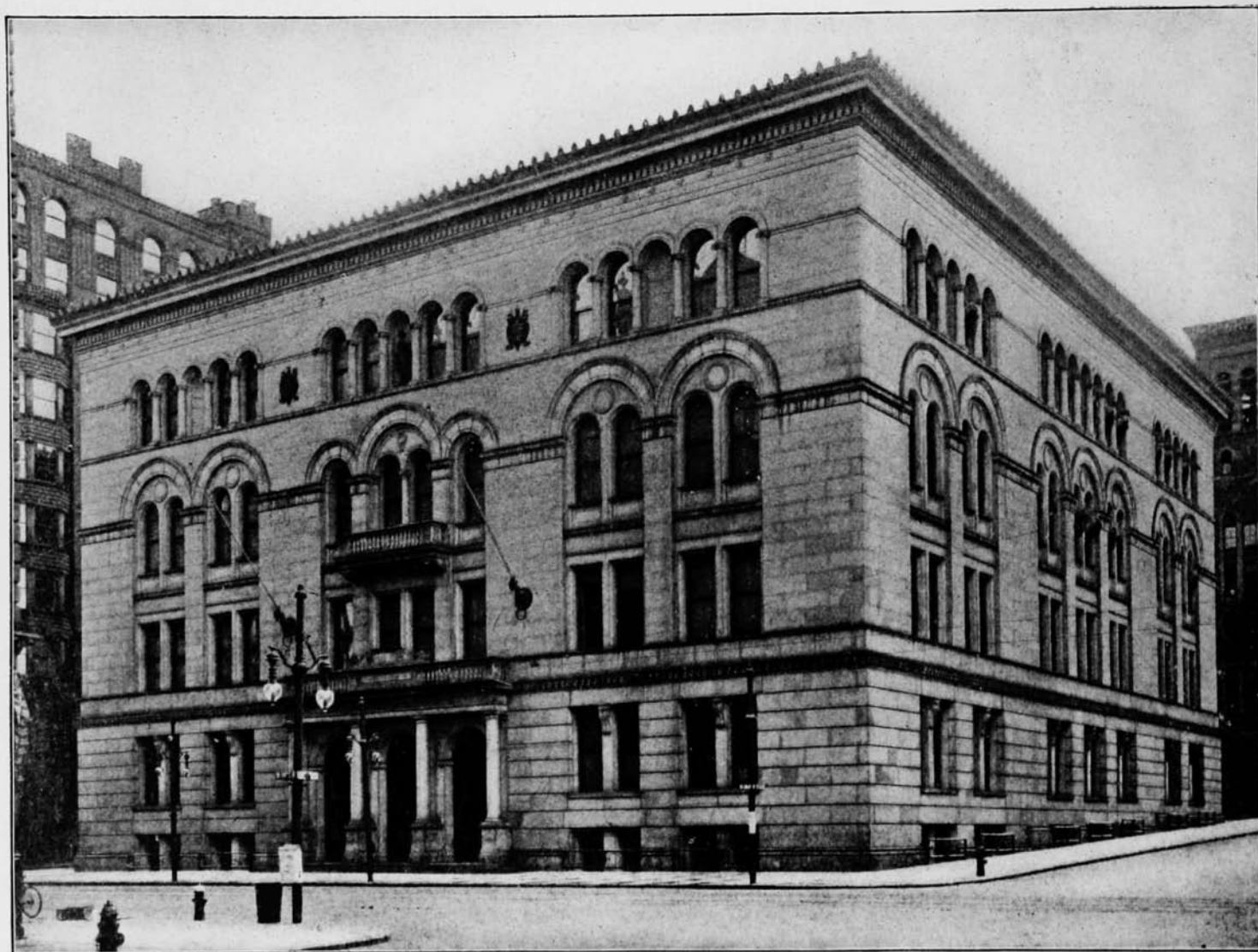
ERIE CANAL AND AQUEDUCT OVER THE GENESEE RIVER



POWERS' HOTEL



MAIN STREET BRIDGE



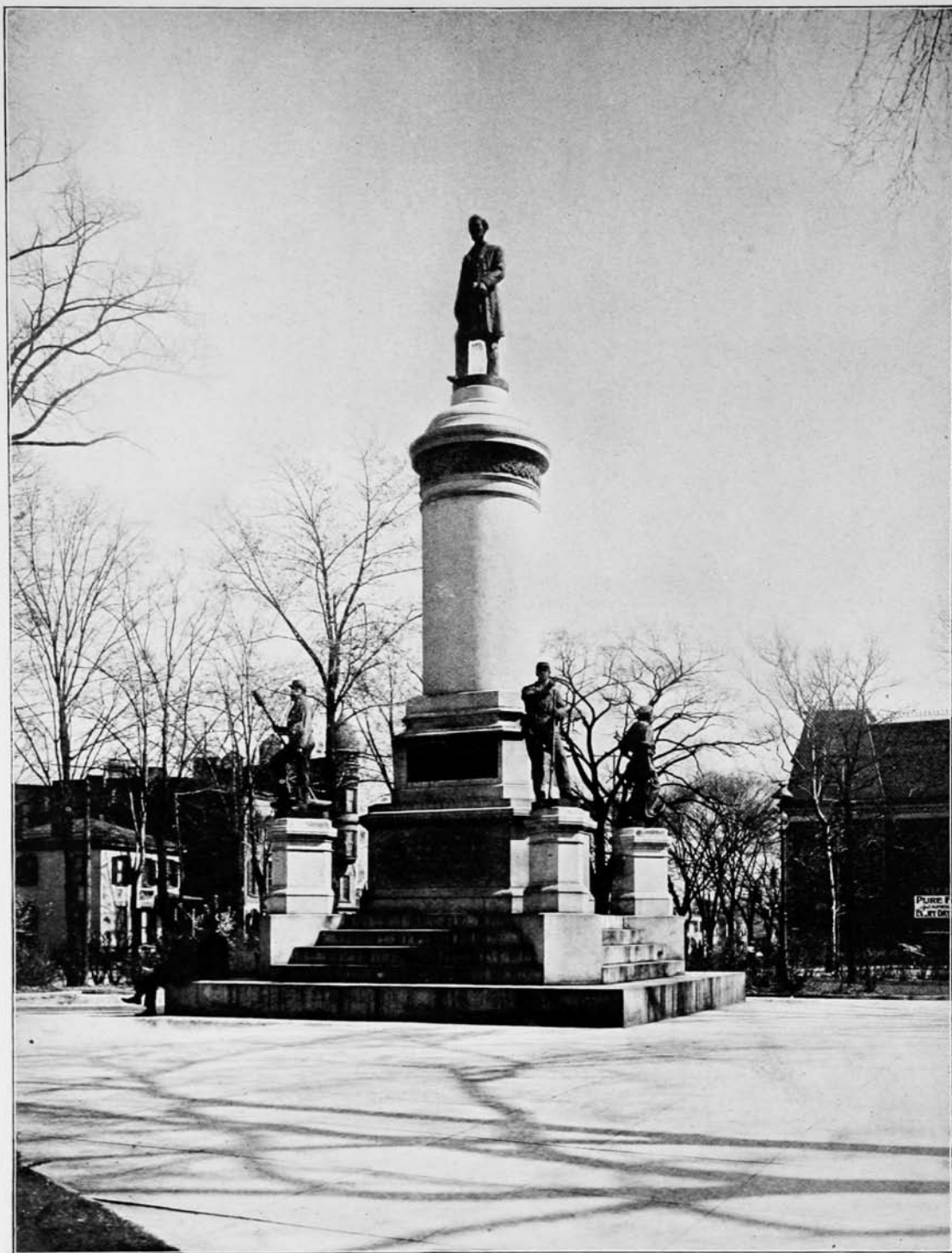
MONROE COUNTY COURT HOUSE



FEDERAL BUILDING



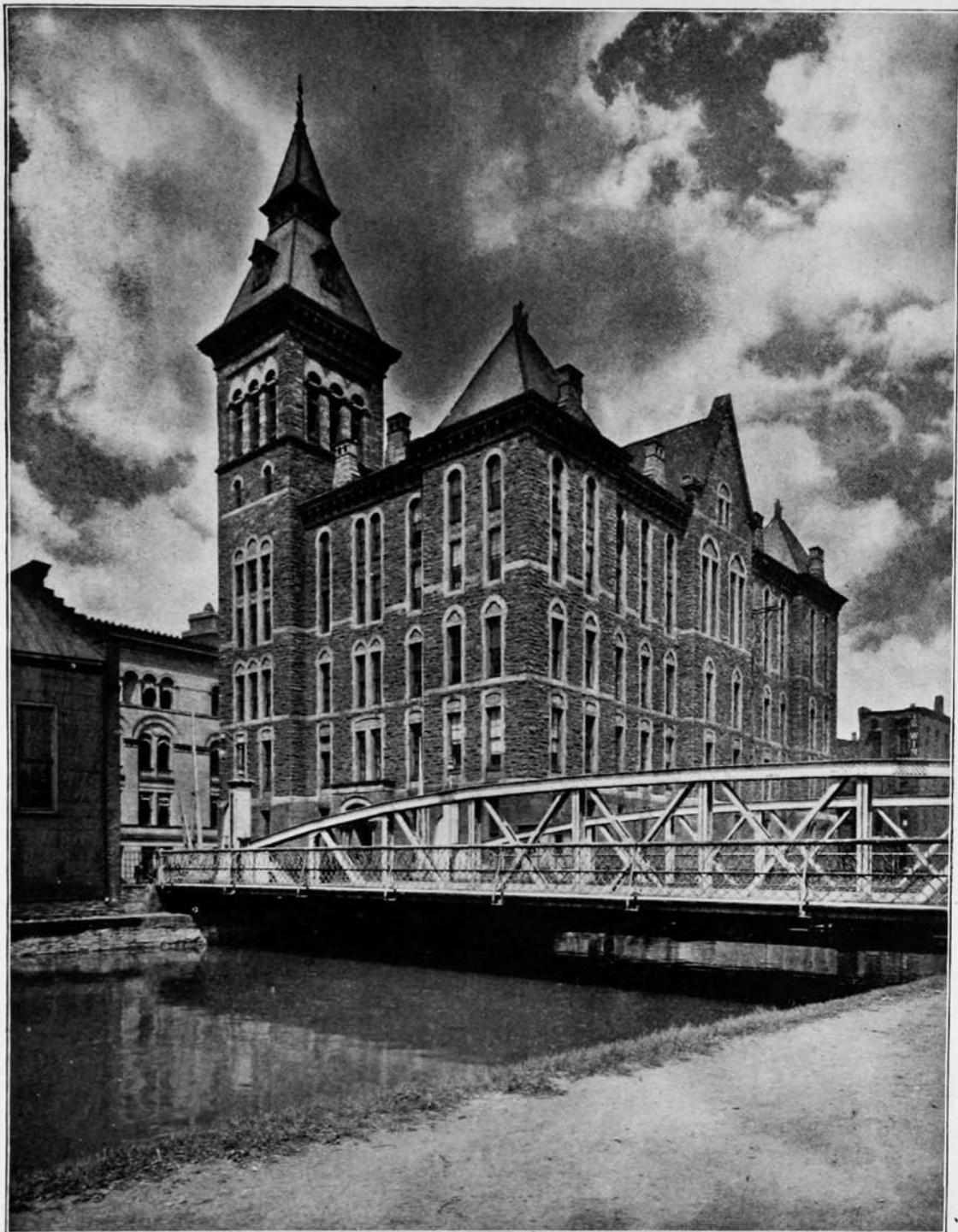
POWERS' BUILDING



SOLDIERS' AND SAILORS' MONUMENT



YOUNG MEN'S CHRISTIAN ASSOCIATION BUILDING



CITY HALL



DOUGLASS MONUMENT



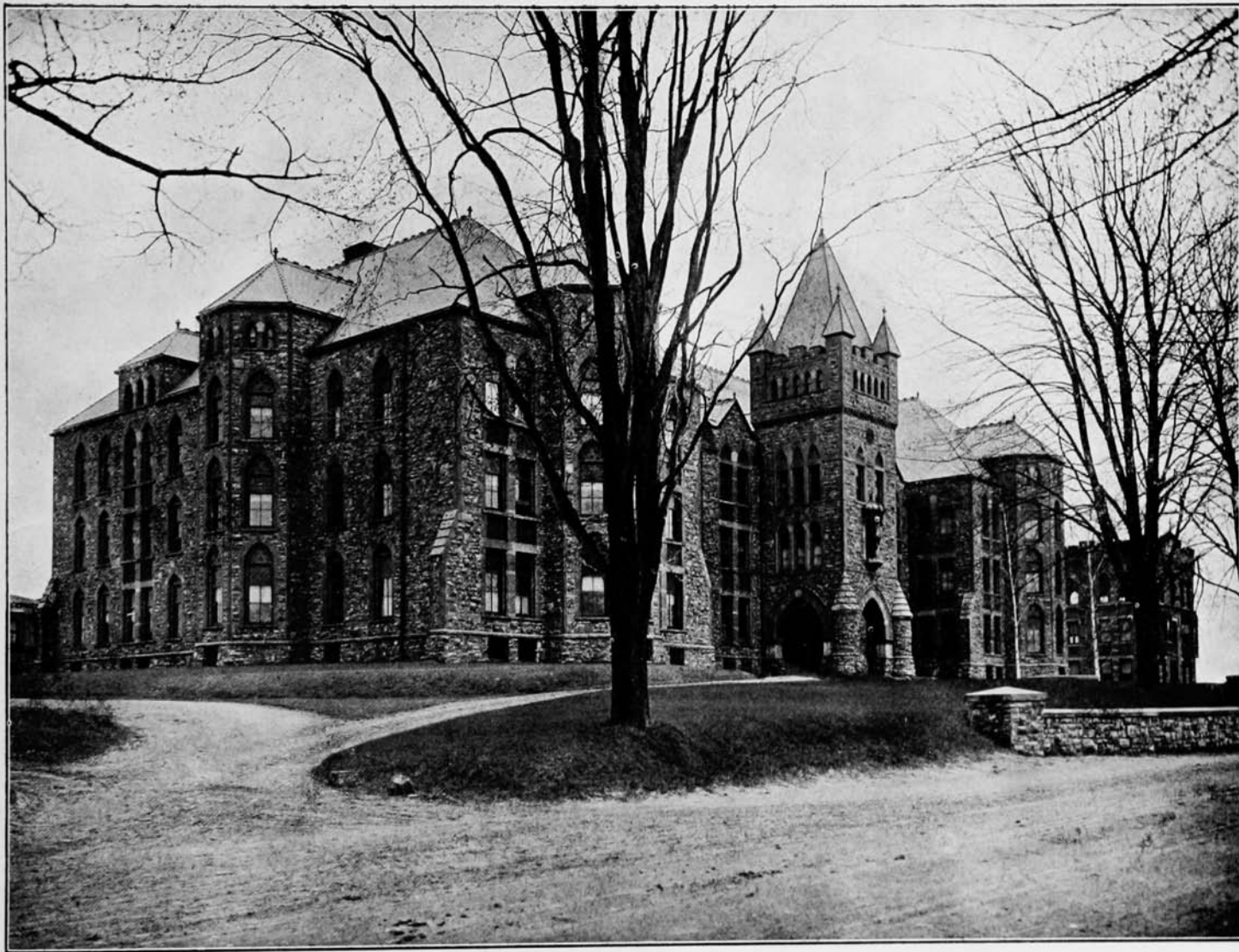
CHAMBER OF COMMERCE BUILDING



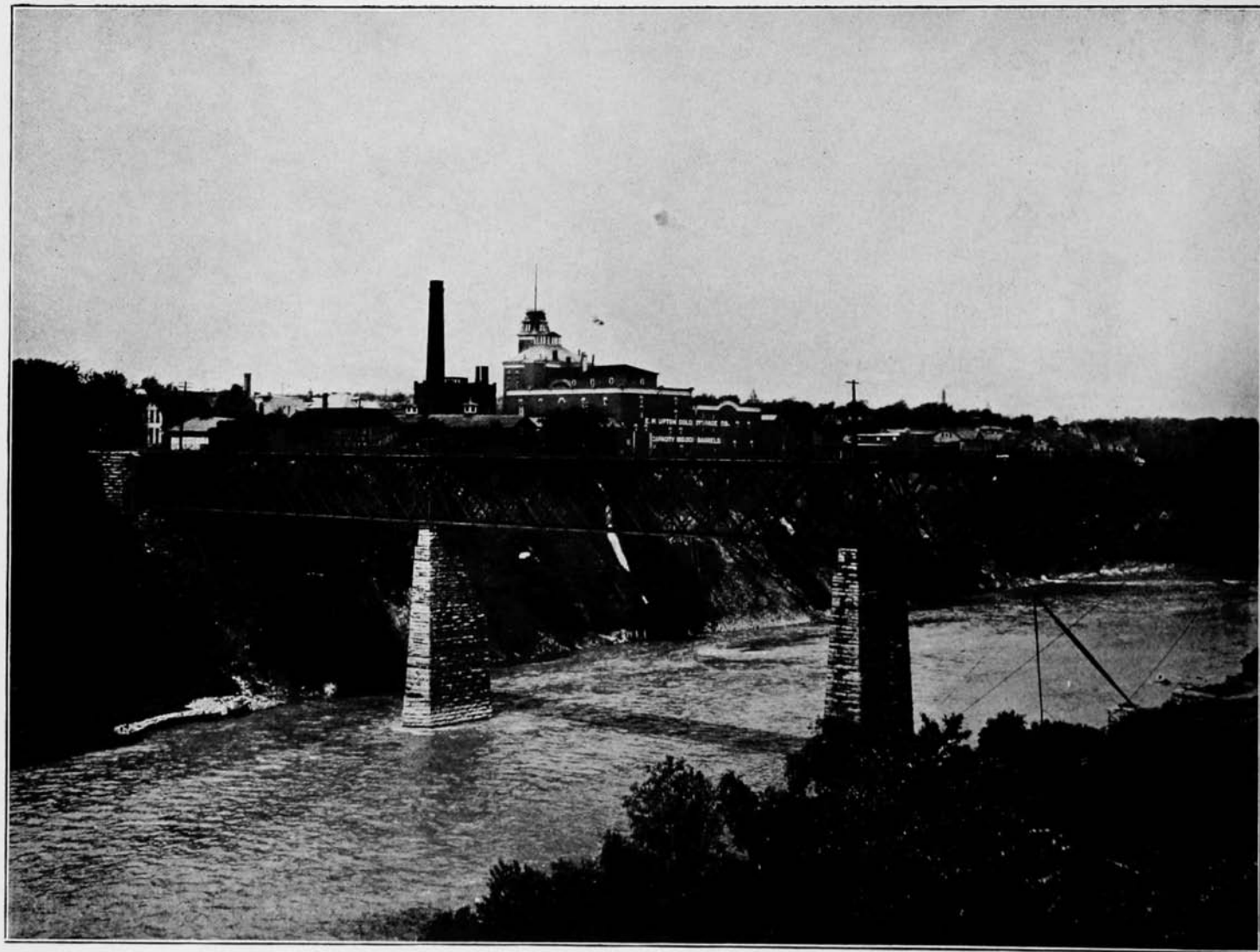
WILDER BUILDING



ROCHESTER UNIVERSITY



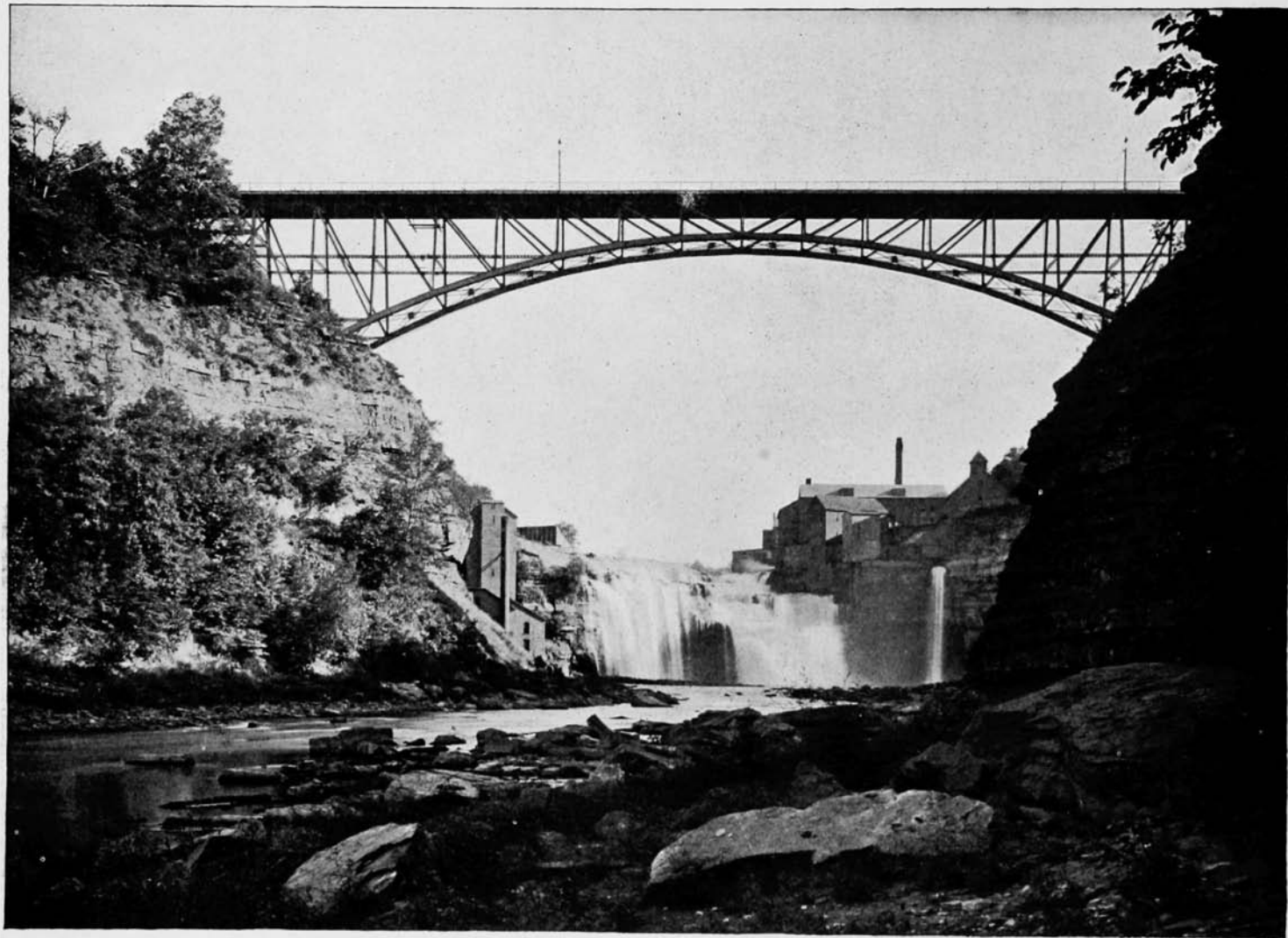
ST. BERNARD'S THEOLOGICAL SEMINARY



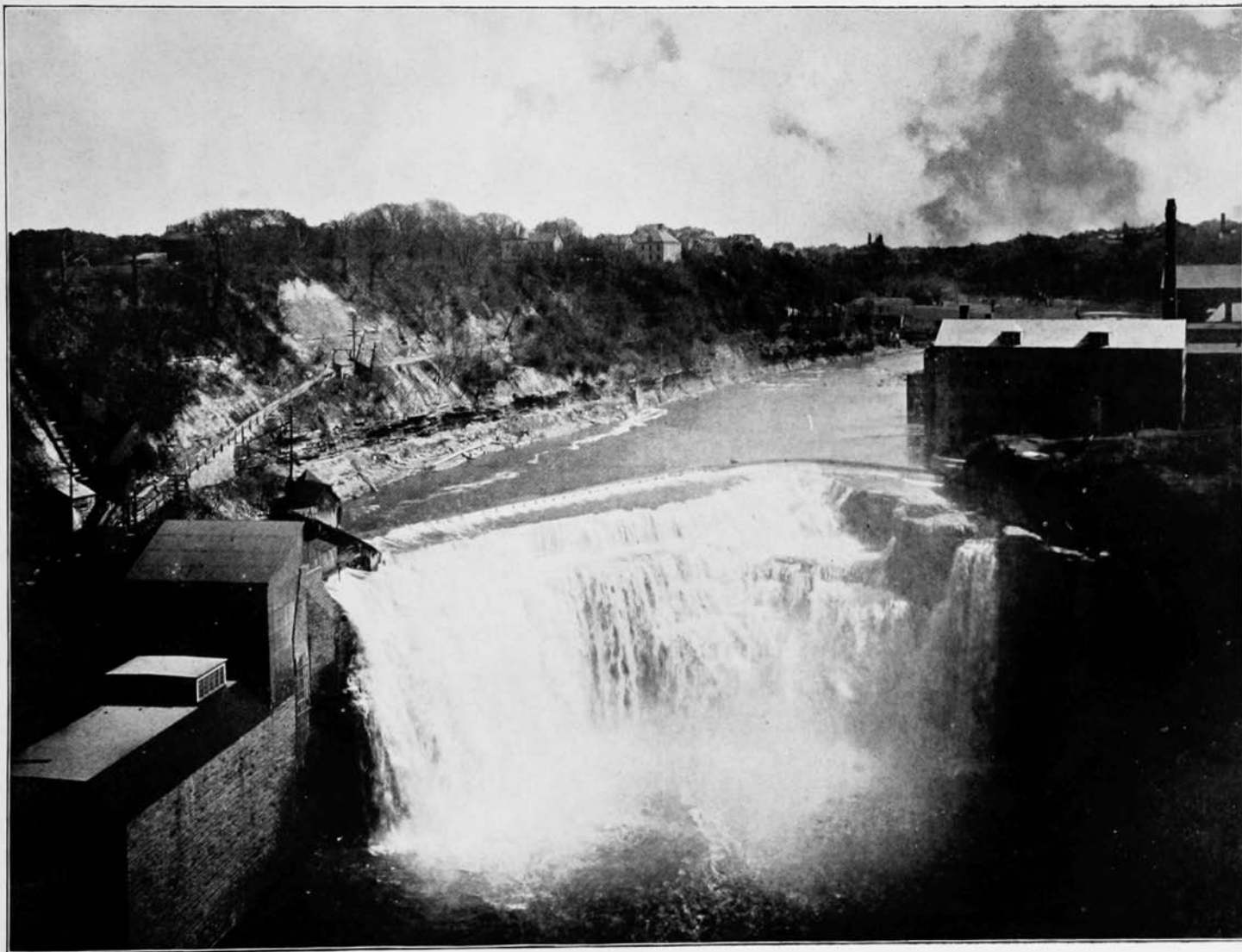
GORGE OF THE GENEESE RIVER



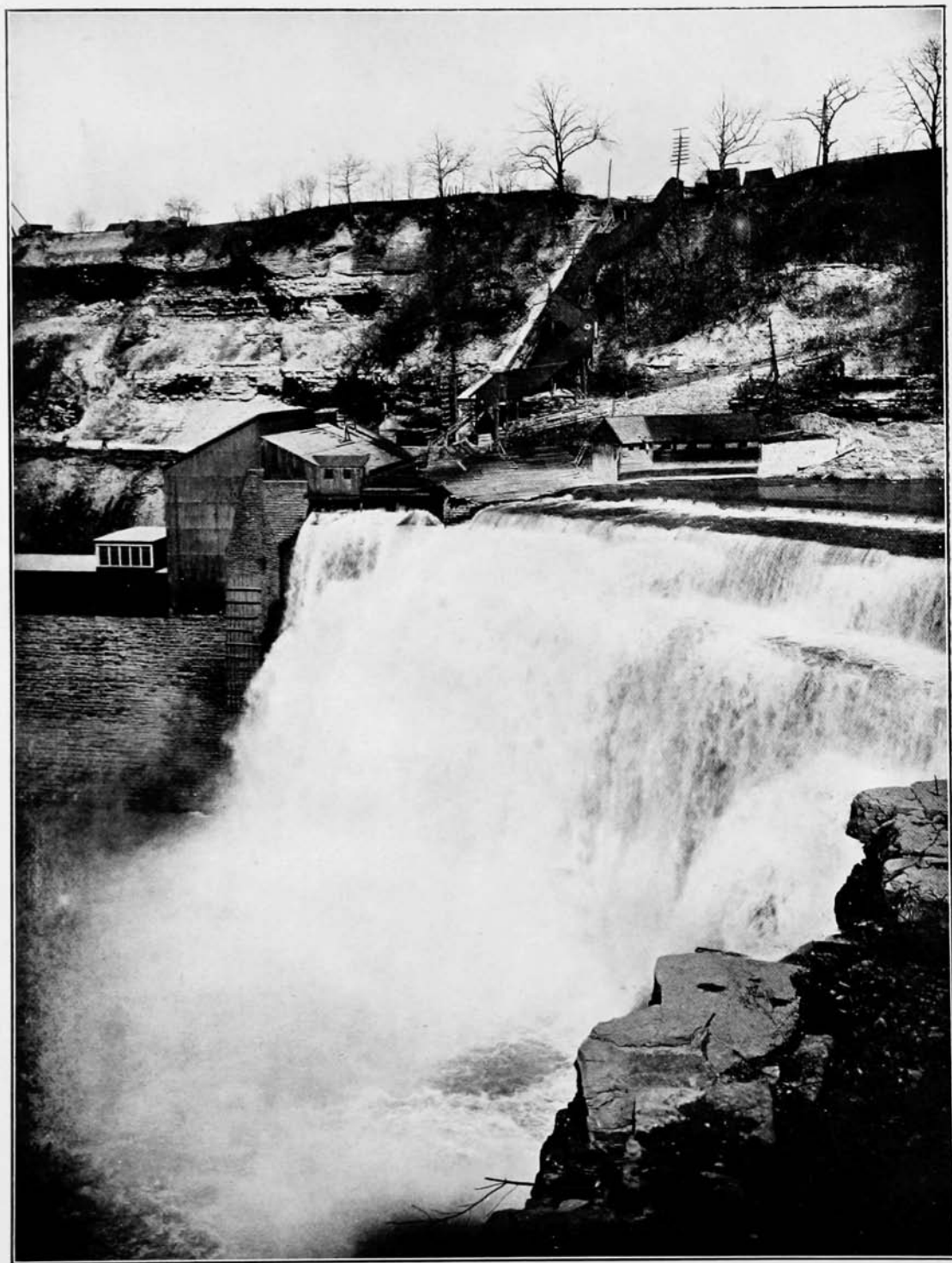
DRIVING PARK AVENUE BRIDGE



DRIVING PARK AVENUE BRIDGE AND LOWER FALLS OF THE GENESEE



LOWER FALLS OF THE GENESEE RIVER



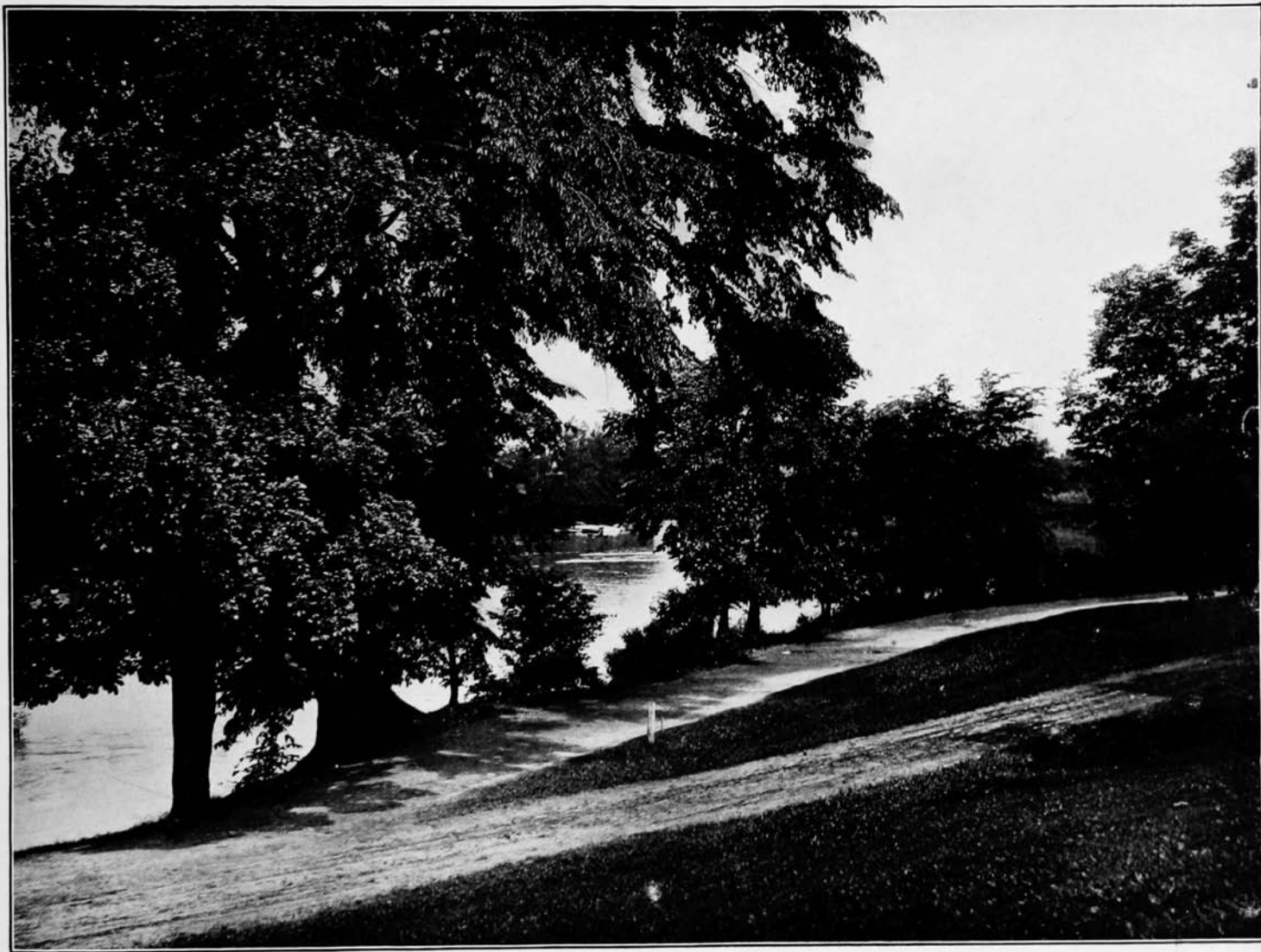
✓ LOWER FALLS OF THE GENESEE RIVER



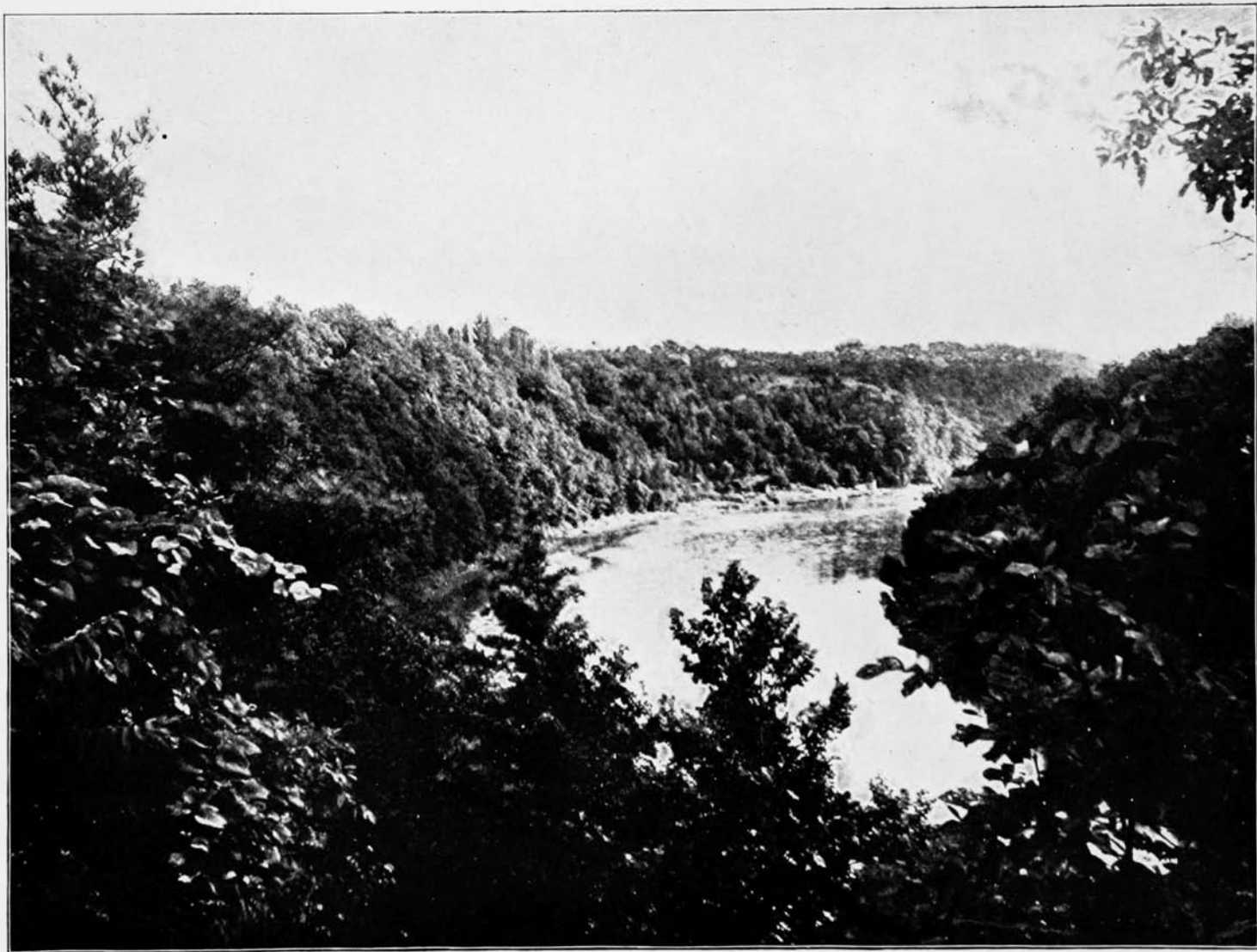
THE RESERVOIR, HIGHLAND PARK



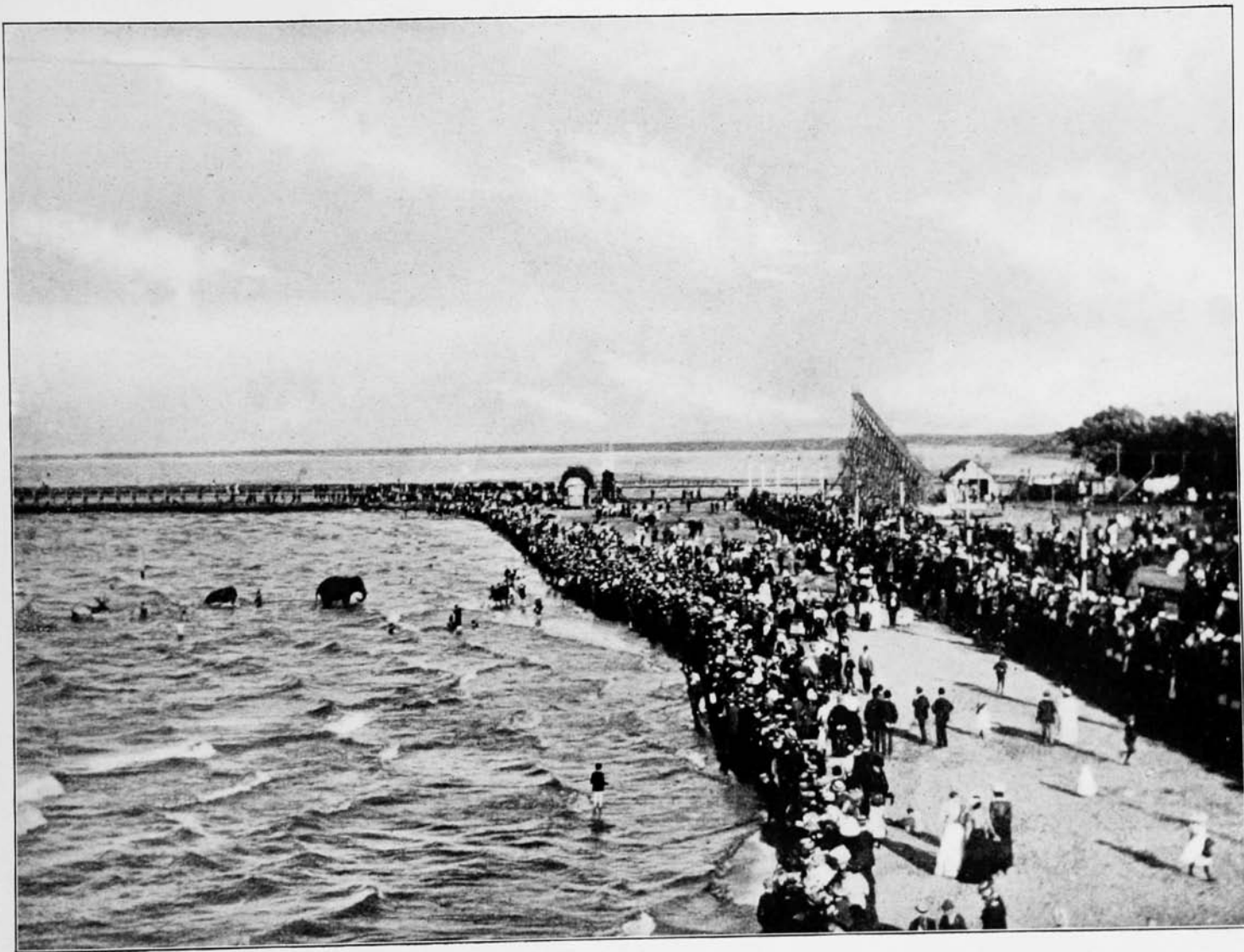
AN AUTUMN DAY IN GENESEE VALLEY PARK



VIEW IN GENESEE VALLEY PARK



VIEW IN SENECA PARK



ONTARIO BEACH



HOTEL ONTARIO AND ONTARIO BEACH



3 9077 03747311 6